
THE SOCIAL SCIENCE RESEARCH AND INSTRUCTIONAL COUNCIL

2016-2017 Annual Report*

July 1, 2016 to June 30, 2017

Dr. Eugene Turner
Department of Geography
CSU, Northridge
eturner@csun.edu

*including Annual Data Usage and Service Report

Contents

Introduction.....	2
Vision.....	3
Mission.....	3
Supporting CSU Faculty in Research and Instruction.....	4
Structure and Governance.....	4
Figure 1. SSRIC Organization and Services Chart.....	4
SSRIC Campus Representative.....	5
SSRIC Committees.....	6
Social Science Student Symposium (S ⁴).....	7
Providing Social Science Resources.....	8
Databases.....	8
Instructional Materials and Workshops.....	8
Faculty Research.....	9
Forums for Sharing Information.....	9
Financials.....	9
Budget Overview.....	9
Figure 2. SSRIC 2016-2017 Budget Distribution.....	10
Subscription Fees.....	10
Table 1. SSRIC 2016-2017 Budget: Expenditures.....	11
Table 2. CSU Campus Subscription Fees 2010-2016.....	12
Baseline Indicators of Activities and Outcomes.....	13
Table 3. Faculty Support: Activities and Outcomes.....	13
Table 4. Student Success: Activities and Outcomes.....	14
Table 5. Faculty Support and Student Success: Activities and Outcomes.....	15
Appendix: SSRIC Annual Data Usage and Service Report	

Introduction

The SSRIC (Council) is organized around scholarly, creative, research and educational activities that combine the interests and expertise of individual faculty, staff and students across the California State University System. The Council is dedicated to assisting students and faculty in their use of social science data for undergraduate and graduate classroom training and research.

Twenty-one campuses jointly participate and share in the cost of database subscriptions, services and governance. The California State University campuses include: Bakersfield, Channel Islands, Chico, Dominguez Hills, East Bay, Fresno, Fullerton, Humboldt, Long Beach, Los Angeles, Monterey Bay, Northridge, Sacramento, San Bernardino, San Diego, San Francisco, San Jose, San Luis Obispo, San Marcos, Sonoma, and Stanislaus.

On November 6, 2015, the Council submitted its request to be officially recognized as a permanently structured, systemwide multi-campus affinity group (per CSU Executive Order 1103). The Council's proposal received the support of 22 campus Presidents with President Jane Close Conoley, California State University, Long Beach, serving as the Council's lead President. On December 18, 2015, the Office of the Chancellor granted conditional authorization for the SSRIC to continue its current operations and to prepare a five-year strategic plan by April 1, 2016. Subsequently, the Council was formally authorized as a sanctioned entity representing CSU interests and resources in the social sciences on May 26, 2016. The authorization is through March 31, 2021 and can be renewed for an additional five (5) year period with the submission of an updated strategic plan on or before November 1, 2020.

Submitted by:

Dr. Eugene Turner
SSRIC Chair 2016-2017
Dept. of Geography
California State University, Northridge
18111 Nordhoff St.
Northridge, California 91330

Vision

SSRIC seeks to enable faculty and students to advance their knowledge and skills in social science by providing access to major database archival resources, by supporting state-of-the art research and instructional tools necessary to excel and maintain the best learning and teaching environments, and by enhancing faculty and student opportunities in their intellectual exploration of the social sciences.

Mission

Founded in 1972, the Social Science Research and Instructional Council (SSRIC) is the oldest of the disciplinary councils in the California State University system. In 2016 the SSRIC also became a CSU Affinity group, one of nine multi-campus centers engaged in research collaboration. (www2.calstate.edu/impact-of-the-csu/research/Pages/campus-research-collaborations.aspx) Members of Council promote the study of social sciences through many of the activities listed below.

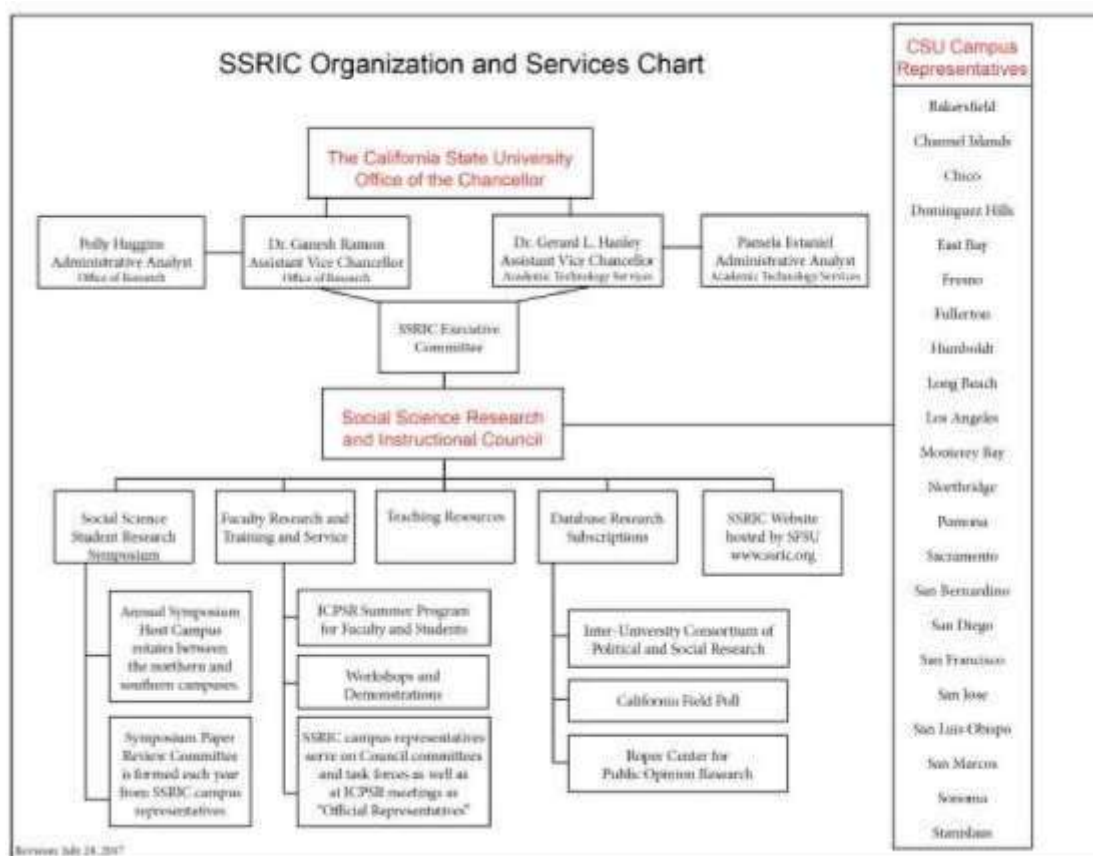
- Facilitates access to social science database subscriptions and online resources, including instructionally-related and research-related materials (www.ssrlic.org)
- Works with the Chancellor's Office and data providers to obtain these high-quality resources at a reasonable cost to the campuses
- Provides opportunities for training and professional development of faculty, staff, and students through teaching, research, scholarly, and creative activities
- Promotes quantitative social science research by students via its annual SSRIC Social Science Student Symposium (S⁴)
- Enhances student learning by raising the academic experience of students through its online resources and database subscriptions
- Provides assistance to campuses in developing, initiating and conducting training programs
- Identifies and promulgates successful computerized social science projects in the CSU curriculum
- Supports a forum for sharing information about social science data and computer products
- Advises CSU administrators on policies related to quantitative social science data for research and instruction, while advancing best practice across campuses
- Represents the collective interests of the CSU campuses to external stakeholders on matters pertaining to social science research and instruction

Supporting CSU Faculty in Research and Instruction

Structure and Governance

The Organization and Services Chart displays the relationship between the Chancellor's Office and the Council. The Council continues to operate under the management of its elected Chair and Executive Committee. Dr. Gerard L. Hanley, Assistant Vice Chancellor of Academic Technology Services, provides administrative support for Council's budget, subscriptions and contracts. Dr. Ganesh Raman, Assistant Vice Chancellor, Office of Research, provides support in an advisory capacity as the Council is an officially recognized CSU Affinity Group.

Figure 1. SSRIC Organization and Services Chart



See Table 3. at the end of this report for more information on SSRIC support for faculty in research and instruction.

2016-2017 Annual Report

SSRIC Campus Representatives

SSRIC membership includes twenty-eight faculty, two staff members and three at-large non-voting faculty emeriti. In addition to representing their campuses, their disciplines are varied and include: Chicano and Latino Studies, Economics, Geography, Geography and Anthropology, History, Library Science, Politics and Public Administration, Political Science, Psychology, Social Sciences, Sociology, Technology. The following list (by campus) shows this past year's membership.

Name	Campus	Department
Rhonda Dugan	CSU Bakersfield	Sociology
Kimmy Kee-Rose	CSU Channel Islands	Psychology
Billy Wagner	CSU Channel Islands	Sociology
Stephen Stratton	CSU Channel Islands	Library
Lori Weber	CSU Chico	Political Science
John Menary	CSU Dominguez Hills	Geography
Carl Sneed	CSU Dominguez Hills	Psychology
Carl Stempel	CSU East Bay	Sociology
Patricia Jennings	CSU East Bay	Sociology
Tim Kubal	CSU Fresno	Sociology
Edward Nelson (at-large)	CSU Fresno	Sociology
Matthew Jarvis	CSU Fullerton	Political Science
Aaron Goetz	CSU Fullerton	Psychology
Sarah Fay Philips	Humboldt State University	Library
Josh Meisel	Humboldt State University	Sociology
José Moreno	CSU Long Beach	Chicano and Latino Studies
Stafford Cox	CSU Long Beach	Academic Technology Services
Gilbert Garcia	CSU Los Angeles	Natural and Social Sciences
Jill Yamashita	CSU Monterey Bay	Psychology
Jennifer Dyer-Seymour	CSU Monterey Bay	Psychology
Regan Maas	CSU Northridge	Geography
Gene Turner (at-large)	CSU Northridge	Geography
John L. Korey (at-large)	CSU Polytechnic Pomona	Political Science
Ellen Berg	CSU Sacramento	Sociology
Aya Ida	CSU Sacramento	Sociology
Eric Vogelsang	CSU San Bernardino	Sociology
Ken Schultz	CSU San Bernardino	Psychology
Ginger Shoulders	San Diego State University	College of Liberal Arts
Francis Neely	San Francisco State University	Political Science
Marcela Garcia-Castañon	San Francisco State University	Political Science
Matt Holian	San Jose State University	Economics
Gregory Bohr	CPSU San Luis Obispo	Social Sciences
Kristin Bates	CSU San Marcos	Sociology
Garry Rolison	CSU San Marcos	Sociology
Brian Gillespie	Sonoma State University	Sociology
Nancy W Hudspeth	CSU Stanislaus	Politics & Public Admin

2016-2017 Annual Report

SSRIC Committees

Council representatives participate in Council governance, promotion of the ICPSR, Field and Roper databases, communication with their respective campus faculty, and the planning of Council services such as training, workshops, development of online course materials, and the student symposium. Most importantly, they serve on the following Council committees.

1. Executive Committee

Eugene Turner (chair, at large, Northridge), Stafford Cox (past-chair, Long Beach), Tim Kubal (chair-elect, Fresno), John Korey (at-large, Pomona) and Ed Nelson (at-large, Fresno)

2. Bylaws Committee (Reactivated on May 6, 2016)

Stafford Cox (chair, Long Beach), Rhonda Dugan (Bakersfield), John Korey (at-large, Pomona) and Jill Yamashita (Monterey Bay)

3. CalSpeaks Task Force (Initiated on May 6, 2016)

Matt Jarvis (Fullerton), John Korey (at-large, Pomona), Marcela (San Francisco), Ed Nelson (at-large Fresno) and Aya Ida (Sacramento)

4. Field Faculty Fellowship Committee (Discontinued Dec. 31, 2016)

2016-2017 Reviewers: Susan Garfin (Sociology, Sonoma, retired), Charles Gossett (Sacramento), Bruce Brown (Pomona) and Ed Nelson (at-large, Fresno, non-voting Chair)

5. ICPSR and Summer Program Liaison

Greg Bohr (Liaison, San Luis Obispo)

6. Social Science Interdisciplinary Program Task Force (Initiated on October 9,

2015) Regan Maas (Northridge), Brian Gillespie (Sonoma), Marisela (SFSU), Billy Wagner (Chair, Channel Islands) and Francis Neely (SFSU) will serve as contact with Gene Geisler.

7. Social Science Student Symposium Awards/Paper Review Committee

Gilbert Garcia (Chair, Los Angeles), Kristen Bates (San Marcos), Rhonda Dugan (Bakersfield), Brian Gillespie (Sonoma), John Menary (Dominguez Hills), Kimmy Kee-Rose (Channel Islands)

8. Social Science Student Symposium Host Campus Liaison Tim

Kubal (Chair, Fresno), Ed Nelson (Fresno) 42nd S⁴ - April 27, 2017.

9. Web Liaison Committee

Greg Bohr (San Luis Obispo), John Korey (at-large, Pomona), Tim Kubal (Chair, Fresno) and Ginger Shoulders (San Diego)

Social Science Student Symposium (S⁴)

In 2017, the 42nd Annual Social Science Student Symposium was held at the Fresno campus (April 27, 2017). The symposium is an all-day event starting at 8 a.m. with registration and ending at 3 p.m. with an award ceremony. During the day, the symposium includes concurrent sessions, each of which can accommodate 3-4 student presentations. SSRIC in collaboration with the host campus provides a guest speaker luncheon for all participants. This year Mark DiCamillo from the Berkeley Intergovernmental Studies Poll spoke on how the national polls missed the victory of Donald Trump in the last national election.

There were 40 student presentations (29 undergraduate, 11 graduate) this year. Fifteen CSU campuses were represented. SSRIC and Fresno faculty and staff served as session moderators and coordinated the check-in and registration tables. The symposium provides both undergraduate and graduate students with a forum to present their work, to see the work of their peers, and to forge connections with faculty experts from across the system. The symposium rotates between northern and southern campuses each year.

Students can also compete for awards by submitting a research paper and presenting at the symposium. Over the past three years, student symposium participation has increased, in part, due to the generous financial support from Dr. Gene Geisler—professor emeritus of political science at San Francisco State and one of the council’s founders. These funds have provided for the SSRIC student paper awards and student travel beginning with the 39th Annual Student Research Conference at Fullerton (May 8, 2014).

Each year, three students are selected for “Best Paper Awards” by the SSRIC Awards/Paper Review committee. These awards come with \$5,000 prizes. This year a \$100 travel allotment was also provided to all paper presenters who traveled from other CSU campuses. Dr. Geisler’s “SSRIC Faculty Memorial Fund” has been very much appreciated by the students.

The following Best Paper Awards were presented this year to the following students:

- The Charles McCall Award for Best Undergraduate Paper: Samantha Luna, California State University, Fresno, *“The Impact of Veteran’s Mental Health and Offense Severity on Admissibility into Veterans Treatment Court.”*
- The Betty Nesvold Award for Best Graduate Paper: Richard Kemp, California State University, Bakersfield *“Preemptive Federalism: The Banking Dilemma Facing State Legal Marijuana Laws.”*
- The Gloria Rummels Award for Best Paper Using Quantitative Data: Shelby Elia, California State University, Fresno, *“Public Perceptions of Exonerees from the Criminal Justice System.”*

See Table 4. at the end of this report for more information on student success.

Providing Social Science Resources

Databases

The CSU subscribes to the following social science data bases:

- Inter-university Consortium for Political and Social Research (ICPSR) at the University of Michigan. Founded in 1962, the Consortium consists of about 760 member institutions, including, since 1972, the CSU. It houses over 500,000 datasets from over 9,675 studies. 69,800 citations of published and unpublished works are linked to its databases.
- Roper Center for Public Opinion Research at Cornell University. Founded in 1947, the Center houses the world's largest archive of survey data. The archive holds over 12,000 U.S. and 8,000 international datasets. iPOLL offers over 700,000 questions and answers from U.S. national adult sample polls.
- Field Research Corporation in San Francisco. An independent, nonpartisan public opinion news service, it has operated since 1947, and has issued over 2,500 reports based on its polls of California residents. On January 1, 2017 the Field Research Corporation was closed by its parent company.
- Currently the SSRIC is preparing an agreement with the Institute of Social Research for the CALSPEAKS program. The program carries out five to twelve surveys per year and will provide data to the CSU along with the opportunity for several joint faculty/student projects. Three to four projects per year that would include questions in one of the polls are to be submitted in a competition. Resulting data would be used by the team for research and available to all faculty, staff, and students in the CSU.

The consolidation of membership in these organizations, facilitated by the Council, represents a considerable savings (\$135,770 which is a savings of 39%) to campuses that would otherwise have to subscribe individually. Students, faculty and staff are able to download data, codebooks, and other material directly to their computers as a result of this access.

Instructional Materials and Workshops

The Council makes available instructional material via its website at www.ssrlic.org. These include two online textbooks, instructional modules and exercises, and instructional handouts. This year, the Web Liaison Committee has completed work with Andrew Roderick (SFSU Academic Technology) to update the website (from Drupal 6 to 8). The new site will be online this summer.

The Council continues to offer free workshops at any campus where faculty have expressed an interest in learning how to access and analyze quantitative data from ICPSR, Roper, and Field and in using SPSS or SDA software.

2016-2017 Annual Report

Faculty Research

Because of the cost savings resulting from the closure of the Field Institute, the Council has directed \$15,200 to fund the cost for faculty to attend the ICPSR Summer Program in 2017. Workshops in this program teach advanced methods of analysis used in social research. The Council promotes the ICPSR Summer Program by distributing the program materials via the Council representatives. Eight faculty were selected to receive compensation to cover the cost of courses running from one week to one month in length in Ann Arbor, Michigan and elsewhere. Greg Bohr (San Luis Obispo) serves as liaison with this program.

ICPSR reported that eight faculty enrolled in the 2017 Summer Program. These attendees identified Fresno, Long Beach, Los Angeles, Sacramento, San Bernardino, and Stanislaus as their home campuses.

Forums for Sharing Information

The Council met three times in the 2016-2017 academic year. The Fall and Spring meetings were hosted at Long Beach (October 14, 2016) and Fresno (April 28, 2017). Both were conducted so that campus representatives could either attend in-person or on-line. The Fall meeting attendance included 4 in-person and 16 on-line, while the Spring meeting attendance included 7 in-person and 12 on-line. The Winter meeting (January 27, 2016) was conducted completely online using Big Blue Button software. There were 12 campus representatives in attendance. While the meeting participation included three, non-voting at-large members, a quorum was attained at each of these SSRIC meetings.

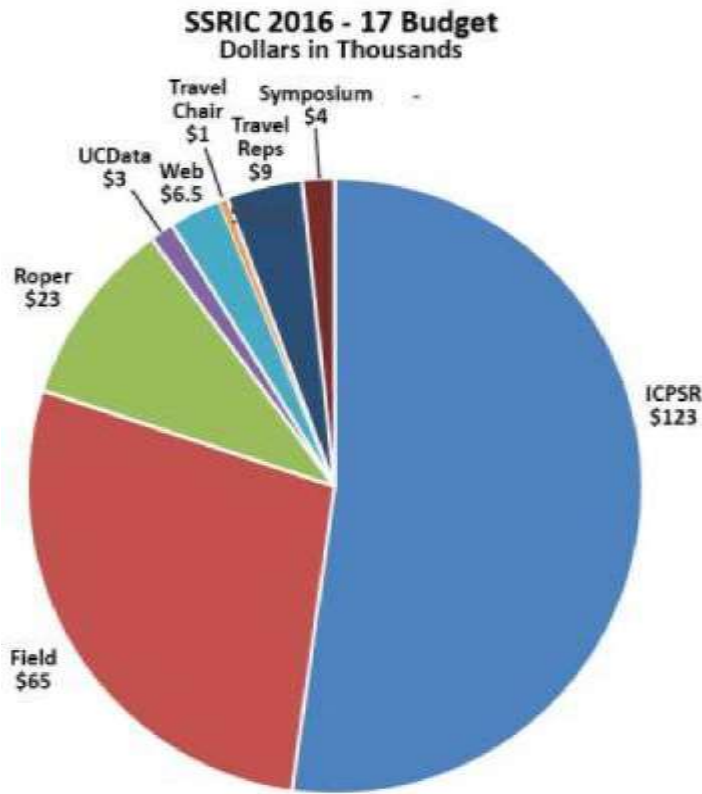
See Table 5. at the end of this report for more information about sharing of social science resources.

Financials

Budget Overview

The 2016-2017 Council budget totaled \$235,985. These funds were to be distributed as shown below in Figure 1: SSRIC 2016-2017 Distribution. ICPSR (52.7%), Field (28.5%) and Roper (10.0%) consumed 91.2% of funds. Travel used about 5.7% of the funds and the Student Symposium accounted for 1.6%. UC DATA (University of California Data Archive and Technical Assistance) and the SFSU Website support represent less than 2%. Note that the Council was supported solely by twenty-one campuses.

Figure 2. SSRIC 2016-2017 Budget Distribution¹



¹ The Council budget for 2016-2017 is \$235,985.

Subscription Fees

The Chancellor's Office Department of Academic Technology Services procures database subscriptions. All services are included for a single flat rate that is assessed based on campus size. The campus subscriptions cover the database licensing fees as well as other services described below.

- archiving and retrieval of Field, Roper, and other data (there are some additional charges for archiving and retrieving these data related to the UCData access to the Field Polls)
- administrative services provided by the Chancellor's Office (in-kind contribution)
- training workshops to be held on various campuses and training materials on our website to provide instruction in using the data sets
- technical support provided by members of the SSRIC for accessing and retrieving data (subject to availability), and
- support for an annual student research symposium (the amount of financial support dependent on both SSRIC budget and host campus)

Table 1. SSRIC 2016-2017 Budget: Expenditures	
Social Science Research and Instructional Council Line Item Budget	
Database Subscriptions	
Inter-University Consortium for Political and Social Research (ICPSR)	\$123,280
California Field Polls/Faculty Fellowship ¹	\$65,600
Roper Center for Public Opinion Research	\$23,175
Subtotal	\$212,055
Web & Access Services	
UCDATA ¹	\$3,000
San Francisco State University	\$6,500
Subtotal	\$9,500
Travel	
Travel – Chair	\$1,000
Travel – Campus Representatives (meetings, workshops, and fees)	\$9,430
Subtotal	\$10,430
Student Symposium	
Conference & Meeting Expenses	\$4,000
Total	\$235,985

¹ UCDATA (University of California Data Archive and Technical Assistance)

Twenty-one campuses shared the cost of the Database Subscription fees and other expenditures for 2016-2017. Campus fees have increased by 5% annually since 2010-2011. This was the second year in which 21 CSU campuses have fully funded SSRIC activities and subscriptions.

2016-2017 Annual Report

Table 2. CSU Campus Subscription Fees 2010-2017							
Campus	2010-11	2011-12	2012-13	2013-14	2014-15	2015-16	2016-17
Bakersfield	\$6,463	\$6,786	\$7,125	\$7,481	\$7,855	\$8,248	\$8,661
Channel Islands	\$3,573	\$3,752	\$3,940	\$4,137	\$4,343	\$4,561	\$4,789
Chico	\$8,615	\$9,046	\$9,498	\$9,973	\$10,471	\$10,995	\$11,544
Dominguez Hills	\$6,463	\$6,786	\$7,125	\$7,481	\$7,855	\$8,248	\$8,661
East Bay	\$6,463	\$6,786	\$7,125	\$7,481	\$7,855	\$8,248	\$8,661
Fresno	\$8,615	\$9,046	\$9,498	\$9,973	\$10,471	\$10,995	\$11,544
Fullerton	\$11,008	\$11,559	\$12,137	\$12,744	\$13,381	\$14,050	\$14,753
Humboldt	\$6,463	\$6,786	\$7,125	\$7,481	\$7,855	\$8,248	\$8,661
Long Beach	\$11,008	\$11,559	\$12,137	\$12,744	\$13,381	\$14,050	\$14,753
Los Angeles	\$8,615	\$9,046	\$9,498	\$9,973	\$10,471	\$10,995	\$11,544
Monterey Bay	\$3,573	\$3,752	\$3,940	\$4,137	\$4,343	\$4,561	\$4,789
Northridge	\$11,008	\$11,559	\$12,137	\$12,744	\$13,381	\$14,050	\$14,753
Pomona*	\$8,615	\$9,046	\$9,498	\$9,973	\$10,471	\$10,995	\$11,544
Sacramento	\$11,008	\$11,559	\$12,137	\$12,744	\$13,381	\$14,050	\$14,753
San Bernardino	\$6,463	\$6,786	\$7,125	\$7,481	\$7,855	\$8,248	\$8,661
San Diego	\$11,008	\$11,559	\$12,137	\$12,744	\$13,381	\$14,050	\$14,753
San Francisco	\$11,008	\$11,559	\$12,137	\$12,744	\$13,381	\$14,050	\$14,753
San Jose	\$11,008	\$11,559	\$12,137	\$12,744	\$13,381	\$14,050	\$14,753
San Luis Obispo	\$8,615	\$9,046	\$9,498	\$9,973	\$10,471	\$10,995	\$11,544
San Marcos	\$3,573	\$3,752	\$3,940	\$4,137	\$4,343	\$4,561	\$4,789
Sonoma	\$6,463	\$6,786	\$7,125	\$7,481	\$7,855	\$8,248	\$8,661
Stanislaus	\$6,463	\$6,786	\$7,125	\$7,481	\$7,855	\$8,248	\$8,661
TOTAL	\$176,092	\$184,901	\$194,146	\$203,853	\$214,046	\$224,748	\$235,985

*The Maritime Academy does not participate due, in part, to an extremely limited social science curriculum. Pomona chose not to subscribe in 2016-17 and has become inactive.

Baseline Indicators of Activities and Outcomes

Table 3. Faculty Support: Activities and Outcomes		
SSRIC supports CSU faculty in their professional research and instructional programs.		2016-2017
ACTIVITY: SSRIC organizes an annual membership of representatives drawn from its 22 CSU campuses.		
1.	Coordinates the selection of at least one (1) representative per participating campus (N=22) on SSRIC. Number of representatives including alternates and at-large members.	33
2.	Manages the access for the twenty-one CSU campuses subscribing to three (3) databases including ICPSR, Field, and Roper. Number of campuses.	21
3.	Updates its social science email distribution list used for communications with the twenty-one CSU campuses. Number of SSRIC email contacts.	1,090
4.	Provides an analysis of database usage, including the number and volume of downloads, the number of online access visits, the number of faculty and student ICPSR accounts, and self-reported classroom uses of databases for instruction.	
	Number of ICPSR Dataset Downloads	8,704
	Volume of ICPSR Dataset Downloads (Gigabytes)	738.2
	ICPSR Dataset Accesses using SDA ¹ (Survey Documentation and Analysis)	1,341
	Number of Roper Center Dataset Downloads	436
	Number of Roper Center iPOLL ² Accesses	152
	Number of California Field Poll Downloads using UCDA ³	1,235
	ICPSR User Accounts ⁴ – Faculty (204), Undergraduates (577), Graduates (312)	1,093
5.	Distributes an Annual Activity and Usage Report to the SSRIC Representatives and the Assistant Vice Chancellor for Research Initiatives and Partnerships; and share this report with the twenty-two (22) campus presidents within 90 days of the end of each fiscal year.	Yes

¹ SDA is an online program developed at University of California, Berkeley that allows individuals to access studies that have been set up for this program.

² iPOLL is a database of survey questions which can be used for trend analysis and to select datasets for downloading.

³ UCDA at the University of California, Berkeley provides access to Field Poll datasets.

⁴ ICPSR User Accounts are those users who have logged into their accounts and have downloaded datasets during the past fiscal year.

Table 4. Student Success: Activities and Outcomes		
SSRIC supports CSU students in their social science studies.		2016-2017
ACTIVITY: SSRIC supports opportunities for enhancing student success through its website and the Social Science Student Symposium (S ⁴).		S ⁴ 42nd
1.	Disseminates promotional messages to increase the number of visits to the SSRIC	Yes
2.	Solicits undergraduate and graduate student participation in the S ⁴ <div style="text-align: right;"> Registrations 53 Undergraduates 29 Graduates 11 Presentations 40 Co-authors, Non-presenters 3 Campuses Represented at the Symposium 18 </div>	
3.	Increase student usage of the databases among those who are S ⁴ presenters. When asked, "Did you collect and present original research data or did you conduct secondary analysis?", students answered: <div style="text-align: right;"> Used original data 55.2% Used secondary data 41.4% Did not use any data (Post S⁴ Evaluation Survey N=27) 3.4% </div>	
4.	Promotes student involvement in mentored research among those who are S ⁴ presenters. <div style="text-align: right;"> Number of students identifying their Faculty Mentors 49 Number of faculty mentors supporting multiple students 11 Unique courses identified by the students attending S⁴ 59 </div>	
5.	Promotes S ⁴ student presenters to publish their research findings. When asked, "Do you intend to submit your research paper for publication within the next year" <div style="text-align: right;"> Students who answered "Yes" 55.5% Students who answered "Uncertain" 22.2% Students who answered "No". 22.2% </div> (Post S ⁴ Evaluation Survey of Presenters N=27)	
6.	Increases number of faculty who participate/attend the S ⁴ . <div style="text-align: right;"> Number of faculty attending, serving as session moderators 10 Awards/paper review committee representatives 6 </div>	

Table 5. Faculty Support and Student Success: Activities and Outcomes		
SSRIC provides students and faculty access to social science resources.		2016-2017
ACTIVITY: SSRIC promotes the Social Science resources through its website, workshops, newsletters and direct email announcements and Social Science Student Symposium (S ⁴).		
1.	Update and advance the usage of the SSRIC Website. Total number of website pageviews Number of website unique pageviews Average minutes spent on website page	59,897 44,846 1:53
2.	Update and further the online availability of teaching resources. SSRIC Website: www.ssrlic.org	
	Website teaching module Website exercises Online textbooks Instructional data subsets Links to other instructional sites ICPSR and Roper YouTube Videos	5 86 3 24 97
3.	Provide at least three training opportunities such as face-to-face, webinars, workshops and online programs. SSRIC Website Teaching Resources www.ssrlic.org	
	Total resources website pageviews Resources website unique Pageview Average time on resources pag CSU workshops for faculty/students CSU demonstrations faculty/students CSU workshop/demonstration participants	32,165 21,468 1:53 2 8 205
4.	Publish the semi-annual SSRIC e-newsletter to SSRIC representatives, who forward the e-newsletter into their campus community. Newsletters published.	2
5.	Publicize SSRIC services/activities and new survey/database offerings via email announcements (6 to 12 per year) to SSRIC representatives, who forward the messages into their campus community. ICPSR announcements distributed to representatives Announcements about Field Poll data Symposium flyers produced	12 6 1

Appendix: SSRIC Annual Data Usage and Service Report

July 1, 2016 to June 30, 2017

Dr. Eugene Turner
Department of Geography
CSU, Northridge

eturner@csun.edu

Contents

Introduction	2
Data	3
ICPSR Usage	3
ICPSR Dataset Downloads by Files and Size.....	3
Table 1: Number of Total Data Sets Downloaded	4
Table 2: Number of Total Gigabytes Downloaded	5
ICPSR Survey Documentation and Analysis (SDA)	6
Table 3: Number of SDA Datasets Accessed	6
ICPSR Summer Programs	6
Table 4: Number of CSU ICPSR Summer Program Participants	7
Roper Center for Public Opinion Research.....	7
Table 5: Number of Roper Datasets Downloaded and iPoll Accesses.....	8
The Field Institute and CALSPEAKS	9
Table 6: Number of Field Dataset Downloads	10
Social Science Student Symposium (S ⁴)	11
Table 7: Number of Student Presentations and Participating Campuses.....	11
Social Science Research and Instructional Center Website	12

Introduction

The Social Science Research and Instructional Council (SSRIC) is a collaboration of 21 CSU campuses with administrative support from the CSU Chancellor's Office. Founded in 1972, SSRIC is the oldest of the discipline councils in the California State University system. With representatives from each of the CSU campuses, the Council assists learning, teaching and research in the social sciences through access to archival database resources as well as an online repository of teaching materials, a student research symposium, and workshops for faculty. In 2016, the SSRIC became one of nine officially recognized affinity groups within the CSU that was engaged in multi-campus collaboration.

With representation and guidance from all 21 participating campuses, the SSRIC:

- Facilitates access to social science database subscriptions and online resources, including instructionally-related and research-related materials.
- Works with the Chancellor's Office and data providers to obtain these high-quality resources at a reasonable cost to the campuses.
- Promotes quantitative social science research by students via its annual Social Science Student Symposium (S⁴).
- Provides opportunities for training and professional development of faculty, staff, and students through teaching, research, scholarly, and creative activities.
- Provides a forum for sharing information about social science data and computer products.
- Advises CSU administrators on policies related to providing quantitative social science data for research and instruction, while advancing best practice across campuses.
- Represents the collective interests of the CSU campuses to external stakeholders on matters pertaining to social science research and instruction.

2016-2017 Annual Report

The teaching resources section of the website includes exercises, modules, and online textbooks. In 2015-16, these materials were viewed **34,338** times. In 2016-17, they were viewed **32,165** times.

Data

The SSRIC is the CSU systems' clearinghouse for social science data, notably data from the Inter-university Consortium for Political and Social Research (ICPSR), The Field Research Corporation, and the Roper Center for Public Opinion Research. These sources provide data to support quantitative social science teaching, research and service by students, staff and faculty, and well as sponsored programs and grant development by CSU research centers.

All the functions described above are performed by faculty representatives as a professional service. Dues requested of individual campuses primarily defray data subscription costs.

ICPSR Usage

The Inter-university Consortium for Political and Social Research (ICPSR) is the largest social science data repository in the world. It is the primary source of social science data for every research-oriented university and nearly every other university and college in the United States. Data access is online and interactive under the *ICPSR Direct* system. The following table summarizes utilization by campus from 2007-2008 through 2016-2017.

ICPSR Dataset Downloads by Files and Size

During academic year 2016-17, **8,704** datasets (**738.2** gigabytes of data) were downloaded from ICPSR by CSU students, faculty, and staff. These totals represent a decrease in usage from the prior year after three successive years of increase.

In addition, usage data always requires one important proviso. A single download may be used in a class with many students, but only shows on the usage chart as a single download. Additionally, a single faculty member may download a study to be used for research by multiple faculty members.

2016-2017 Annual Report

Table 1: Number of Total Data Sets Downloaded

Inter-University Consortium for Political and Social Research										
	07-08	08-09	09-10	10-11	11-12	12-13	13-14	14-15	15-16	16-17
Bakersfield	613	737	124	2,429	1,221	377	138	393	197	9
Channel Islands	61	129	122	11	55	11	45	26	380	347
Chico	335	516	556	350	398	324	392	375	226	445
Dominguez Hills	15	14	19	16	3	2	340	34	51	2
East Bay	289	512	460	231	92	27	7	138	9	5
Fresno	436	99	69	248	187	167	445	1,135	1,423	921
Fullerton	290	724	755	1,109	1,342	245	1,061	1,649	901	1176
Humboldt	75	124	335	160	436	61	37	123	43	94
Long Beach	942	927	1,736	664	482	1,040	1,664	1,234	443	419
Los Angeles	534	346	1,335	441	448	105	27	130	58	301
Monterey Bay	38	5	16	81	142	60	0	6	2	6
Northridge	1,114	2,955	6,490	1,597	2,276	682	2,676	1,123	3,068	2955
Pomona	258	525	246	354	73	258	521	8	1,224	2
Sacramento	621	653	1,170	891	1,289	521	380	309	516	454
San Bernardino	6	42	575	873	247	54	95	32	79	26
San Diego	325	612	1,816	1,749	1,012	910	271	539	645	810
San Francisco	229	1,130	71	387	287	161	106	1,643	141	329
San Jose	*	*	119	164	221	33	58	84	142	159
San Luis Obispo	386	361	35	2	232	165	59	256	426	101
San Marcos	103	187	350	302	542	103	83	534	309	98
Sonoma	160	36	54	400	71	36	53	30	9	
Stanislaus	573	72	333	2,906	187	182	306	87	295	44
Total	7,403	10,706	16,786	15,365	11,243	5,524	8,764	9,888	10,587	8704
*San Jose did not subscribe in AY 2007-08 and 2008-09.										

2016-2017 Annual Report

Table 2: Number of Total Gigabytes Downloaded

Inter-University Consortium for Political and Social Research										
	07-08	08-09	09-10	10-11	11-12	12-13	13-14	14-15	15-16	16-17
Bakersfield	30.4	3.4	6.4	62.6	18.6	13.9	9.0	75.5	17.3	0.3
Channel Islands	0.8	13.3	28.2	0.4	81.0	1.8	20.6	5.5	31.0	20.5
Chico	27.9	27.5	23.7	22.2	30.6	30.4	38.7	43.0	33.2	54.8
Dominguez Hills	0.4	0.6	0.5	1.8	0.8	0.2	9.9	6.0	5.2	0.01
East Bay	7.6	14.4	28.7	3.6	5.5	2.2	0.7	3.7	0.1	0.9
Fresno	5.4	1.4	4.8	9.0	18.7	14.0	22.7	132.7	73.3	86.1
Fullerton	7.4	31.1	13.5	19.8	50.0	21.9	133.8	75.5	129.9	56.8
Humboldt	1.2	3.2	18.2	4.2	7.5	4.2	1.4	3.4	8.7	2.7
Long Beach	22.5	39.2	51.2	43.8	20.4	65.7	90.1	84.9	31.4	49.8
Los Angeles	14.9	5.7	60.8	11.6	14.1	44.4	1.3	21.6	14.0	45.6
Monterey Bay	3.0	0.0	0.8	5.9	20.2	2.4	0.0	0.0	0.0	10.9
Northridge	28.3	245.6	207.7	64.0	100.0	24.6	118.1	76.1	278.9	238.3
Pomona	12.2	23.3	2.8	7.6	0.5	87.9	27.6	0.7	10.1	
Sacramento	29.9	27.7	94.2	73.7	107.1	40.6	30.2	30.7	107.2	45.1
San Bernardino	1.2	0.6	20.0	29.9	15.6	4.7	2.6	1.4	3.9	2.4
San Diego	17.7	19.1	57.9	36.7	82.5	78.2	17.2	52.9	72.2	76.6
San Francisco	28.8	9.5	54.3	41.9	9.2	3.9	10.4	46.1	12.8	12.4
San Jose	*	*	28.3	10.1	52.3	4.5	3.6	5.5	10.5	13.9
San Luis Obispo	25.6	18.7	5.1	0.1	16.0	4.8	2.2	22.3	21.0	13.2
San Marcos	3.4	21.2	54.0	28.9	26.6	16.0	20.1	41.0	26.8	6.1
Sonoma	18.0	2.3	9.4	37.4	2.8	2.5	1.4	1.5	0.9	
Stanislaus	9.8	0.8	4.6	91.2	5.4	16.6	7.1	1.5	4.0	1.7
Total	296.5	508.7	774.9	606.4	685.4	485.2	568.7	731.3	892.4	738.2
*San Jose did not subscribe in AY 2007-08 and 2008-09.										

ICPSR Survey Documentation and Analysis (SDA)

ICPSR maintains an archive of nearly 800 data sets that use SDA (Survey Documentation and Analysis) which was written at UC Berkeley. SDA is an online program that allows individuals to access studies that have been set up for this program. The table below shows the number of times that SDA data files in the ICPSR were accessed by CSU campuses.

Table 3: Number of SDA Datasets Accessed

Fiscal year	Number of datasets accessed
2007-08	1,310
2008-09	1,454
2009-10	1,501
2010-11	1,311
2011-12	2,611
2012-13	1,531
2013-14	1,687
2014-15	1,845
2015-16	1,457
2016-17	1,341

ICPSR Summer Programs

ICPSR also offers an extensive summer program in quantitative analysis. The following table summarizes the number of faculty and students that were enrolled in the ICPSR's summer program from 2006 through 2016.

Table 4: Number of CSU ICPSR Summer Program Participants

Summer	Number of enrollees
2006	7
2007	2
2008	7
2009	14
2010	9
2011	7
2012	9
2013	12
2014	10
2015	14
2016	11
2017	7

Roper Center for Public Opinion Research

The Roper Center provides public opinion data for the nation and the world. Studies go back many decades providing the opportunity to do longitudinal research. The CSU established a system wide membership in the Roper Center in October, 2004. From October, 2004 through September, 2005 the CSU was limited to 50 data sets per year and data had to be ordered through one point of contact. Starting in October, 2005, CSU students, faculty, and staff could download Roper data directly to their desktop through RoperExpress (similar to ICPSR Direct). This resulted in a large increase in utilization of Roper data.

The following table summarizes the number of data sets that were downloaded from the Roper Center archive during 2006-07 through 2016-17 by CSU students, faculty, and staff. In 2016-17, 436 datasets were downloaded. The Roper Center also offers iPOLL, which is a data base of survey questions which can be used for trend analysis and to select data sets for

2016-2017 Annual Report

downloading. The table also reports the number of times that students, faculty, and staff used iPOLL. In 2016-17, iPOLL was accessed 152 times.

Table 5: Number of Roper Datasets Downloaded and iPOLL Accesses

Number of Datasets Downloaded											Number of iPOLL Accesses									
	07-08	08-09	09-10	10-11	11-12	12-13	13-14	14-15	15-16	16-17	07-08	08-09	09-10	10-11	11-12	12-13	13-14	14-15	15-16	16-17
Bakersfield	14	57	64	44	55	102	5	1	17	69	6	31	24	40	12	30	4	0	17	0
Channel Islands	3	4	6	41	0	0	0	0	0	17	10	17	9	3	1	0	0	0	0	7
Chico	0	36	3	21	0	12	2	5	43	0	3	74	4	13	145	0	33	0	56	0
Dominguez Hills	21	444	362	483	361	143	44	13	2	2	57	427	443	342	662	5	12	13	0	0
East Bay	2	2	2	3	0	0	0	0	0	10	3	2	1	1	16	0	0	0	0	0
Fresno	9	2	37	16	3	38	260	677	58	274	18	10	52	13	12	9	77	587	19	13
Fullerton	13	53	11	30	7	0	0	4	25	0	21	59	22	21	35	26	11	2	0	0
Humboldt	18	10	5	39	5	8	0	1	0	0	21	8	16	24	12	0	0	0	0	0
Long	64	4	6	0	0	27	42	4	26	0	37	22	17	4	355	14	9	13	0	1
Los	2	0	1	0	1	3	48	1	6	0	1	0	3	0	259	7	17	0	59	4
Monterey Bay	6	0	0	0	0	5	2	0	20	0	16	1	0	0	0	0	0	0	5	0
Northridge	7	2	0	14	38	31	6	1	0	1	28	5	11	8	808	13	0	7	0	0
Pomona	3	9	12	12	0	5	28	1	0	0	40	23	23	9	10	0	19	7	0	0
Sacrament	1	4	4	22	4	6	0	1	0	0	3	7	24	8	4	0	0	0	0	0
San Bernardino	0	3	17	4	0	0	1	11	0	0	0	1	23	46	93	10	0	4	0	0
San Diego	11	15	7	27	8	22	2	2	4	0	19	7	10	15	44	0	0	25	1	0
San Francisco	40	4	6	66	0	8	0	54	0	25	51	5	3	8	4	0	0	0	0	0
San Jose	*	*	0	3	12	0	2	13	4	12	*	*	9	9	469	2	0	0	0	0
San Luis Obispo	0	7	4	0	0	10	22	10	4	5	0	1	6	30	434	1	9	11	2	6
San	0	0	2	0	7	0	4	0	7	21	4	0	2	0	95	0	0	0	0	0
Sonoma	30	4	0	0	18	10	0	0	0	0	46	4	1	1	254	24	0	185	5	0
Stanislaus	4	2	0	5	0	31	382	307	0	0	15	6	0	3	0	0	2	1	0	0
Unknown	0	0	7	42	0	0	0	0	0	0	0	0	17	27	0	0	0	0	0	0
TOTAL	248	662	556	872	519	461	850	1,106	74	436	399	710	720	625	3,724	141	193	855	34	15

The Field Institute and CALSPEAKS

The CSU maintained a membership in the Field Institute which provided our students, faculty, and staff access to both current and past Field polls. The Field Poll was one of several state polls that provide current public opinion data for the state on issues of interest to policy makers, researchers, and students. In addition to access to these polls, our membership in The Field Institute provided one faculty member with the opportunity to place 12 questions per year on a Field Poll.

The CSU contracts with UC DATA at UC Berkeley to provide access to the data sets we receive from the Field Institute. The following table provides information on the number of times files were downloaded from the Field archive at Berkeley.

During academic year

2016-17, **1,235** files were downloaded.

The Field Poll ceased operation at the end of 2016 so the utilization figures represent primarily the first half of the academic year.

During the spring and summer of 2017 the SSRIC examined possible sources for replacement of the survey data collected by the Field Institute. Located at CSU, Sacramento, the Institute of Social Research collects such data through its CALSPEAKS program. The program carries out five to twelve surveys per year and would provide data to the CSU along with the opportunity for several faculty/student projects. Three to four projects per year that would include questions in one of the polls are to be submitted in a competition. Resulting data would be used by the team for research and would be available to all faculty, staff and students in the CSU. Contractual arrangements are currently underway to participate in the CALSPEAKS program.

2016-2017 Annual Report

Table 6: Number of Field Dataset Downloads

	07-08	08-09	09-10	10-11	11-12	12-13	13-14	14-15	15-16	16-17
Bakersfield	0	0	1	0	0	70	0	0	0	0
Channel Islands	0	0	0	2	0	0	0	0	0	7
Chico	519	361	232	78	153	115	184	120	39	195
Dominguez Hills	0	0	0	1	0	0	0	0	0	0
East Bay	0	18	18	0	1	0	25	0	0	0
Fresno	70	28	48	19	13	12	110	1,779	1,014	321
Fullerton	0	0	0	255	34	0	0	0	0	0
Humboldt	385	449	181	337	211	23	3	0	0	13
Long Beach	11	0	0	1	1	1	0	16	0	2
Los Angeles	150	0	0	0	9	0	0	0	0	0
Monterey Bay	0	0	0	0	0	1	0	0	0	0
Northridge	0	0	1	1	0	0	0	1	0	2
Pomona	268	96	37	40	33	0	115	0	0	0
Sacramento	72	23	158	40	28	1	36	4	4	3
San Bernardino	1	0	37	3	2	0	0	0	0	0
San Diego	2	6	4	0	0	0	13	13	23	0
San Francisco	375	3	156	75	49	116	10	130	0	692
San Jose	*	*	0	65	500	21	0	0	20	0
San Luis Obispo	13	0	51	93	34	0	0	0	0	0
San Marcos	0	0	0	0	0	0	0	0	0	0
Sonoma	3	0	0	0	0	0	0	0	0	0
Stanislaus	207	0	0	0	14	0	0	0	0	0
Unknown Campus	0	0	2	0	0	0	0	0	0	0
TOTAL	2,076	984	926	1,010	1,082	360	496	2,063	1,100	1235
*San Jose did not subscribe in AY 2007-08 and 2008-09.										

Social Science Student Symposium (S⁴)

The SSRIC sponsors an annual student symposium for both undergraduates and graduates where students can present their research in a supportive setting. For many students, this is their first opportunity to present their research at a professional conference. The symposium rotates between northern and southern campuses each year.

Students can compete for awards by submitting a research paper and presenting at the symposium. Over the past three years, student symposium participation has increased, in part, due to the generous financial support from Dr. Gene Geisler—professor emeritus of political science at San Francisco State and who is one of the council’s founders. These funds (\$20,000 for each of the past three years) provide for the SSRIC student paper awards and student travel.

The 2017 symposium was held at Fresno State with 40 presentations from 18 participating campuses. The following table summarizes student symposium activity for the years 2007-2017.

Table 7: Number of Student Presentations and Participating Campuses*

Social Science Student Symposium (S⁴)			
Yea	Host Campus	Student Presentations	CSU Campuses Participating
2007	East Bay	36	13
2008	Long Beach	47	8
2009	Sacramento	43	12
2010	Pomona	33	9
2011	San Jose	14	4
2012	Los Angeles	52	9
2013	San Francisco*	30	8
2014	Fullerton	79	16
2015	Sacramento	72	16
2016	San Diego	63	13
2017	Fresno	40	18

*Approximate values

Social Science Research and Instructional Center Website

The SSRIC Web site is online at www.ssrc.org. The site consolidates and expands information previously scattered on servers at the Bakersfield, Los Angeles, and Pomona campuses. The new site makes it much easier to communicate information about resources, events, and services provided to students, faculty, and staff through the Council. The site offers among other things:

- Announcements of upcoming events
- Contact list of Council representatives from each campus
- Information for research-oriented social science faculty throughout the CSU
- Comprehensive information about the annual Social Science Student Symposium (S⁴)
- Instructions for downloading ICPSR, Field, and Roper data
- Information about the Field Faculty Fellowship program
- Information about the ICPSR Summer Program
- Links to various sites that have useful research information
- Curriculum materials contained in the SSRIC Teaching Resources, including various modules and exercises and an SPSS primer for versions 22 and 23
- Curriculum materials contained in POWERMUTT, an online text for teaching research methods in political science and cognate disciplines

2016-2017 Annual Report

The teaching resources section of the website includes exercises, modules, and online textbooks. In 2015-16, these resources were viewed **34,338** which decreased to **32,165** in 2016-17.